



**Cargo Management  
Products**

# OPERATION & MAINTENANCE MANUAL

## DD4000C (7225C000)



*Link Mfg. Ltd.  
223 15th St. N.E.  
Sioux Center, IA USA  
51250-2120*

*(712) 722-4868  
Fax (712) 722-4779*

**QUESTIONS?  
CALL CUSTOMER  
SERVICE  
1-800-248-3057  
[www.linkcmp.com](http://www.linkcmp.com)**

The **Link DD4000C** fits 2007 and newer Sprinter 2500 HC and SHC vans.  
(Older model vans use 7225A000).

**IMPORTANT:** IT IS IMPORTANT THAT THE ENTIRE OPERATION INSTRUCTIONS BE READ THOROUGHLY BEFORE USING THIS SYSTEM.




## 1. INTRODUCTION

Thank you for choosing a Link Cargo Management Products (CMP) DD4000 Double Deck system. We want to help you to get the best results from the deck and to operate it safely. This manual contains information to introduce you to the Link CMP DD4000 and to assist you with its operation. The manual is intended solely for use with this product

All information in this manual is based on the latest information available at the time of printing. Link Manufacturing reserves the right to change its products or manuals at any time without notice. Contact Link CMP at (800) 248-3057 for information on recent changes to products.

Damaged components should be returned to Link with a pre-arranged Returned Goods Authorization (RGA) number through the Customer Service Department. The damaged component may then be replaced if in compliance with warranty conditions.

## 2. SAFETY SYMBOLS, TORQUE SYMBOL, and NOTES

	<p>This is the safety alert symbol. It is used to alert you to potential personal injury hazards. Obey all safety messages that follow this symbol to avoid possible injury or death.</p>
	<p><b>WARNING</b> indicates a potentially hazardous situation which, if not avoided, could result in death or serious injury.</p>
	<p><b>CAUTION</b> indicates a potentially hazardous situation which, if not avoided, could result in minor or moderate injury.</p>
<p><b>CAUTION</b></p>	<p><b>CAUTION</b> used without the safety alert symbol indicates a potentially hazardous situation which, if not avoided, may result in property damage.</p>

## 3. SAFE WORKING PRACTICES:

### 3.1

#### CAUTION

- The operation of the DD4000 Double Deck transport system involves moving parts.
- During the course of travel pinch points may exist between components.
- Keep hands and fingers clear of moving components during operation.

### 3.2

#### CAUTION

- Practice safe lifting procedures.
- The deck weldments are heavy, and can cause injury if lifted improperly or dropped. Consider size, shape, and weight of objects being moved.
- Obtain help or the assistance of a crane when lifting heavy assemblies. Make certain the path of travel is clear.

## 4. OPERATION GUIDELINES

- 4.1 In order for this deck to operate properly, it must operate in the parameters specified by Link.
- 4.2 No alterations of any Link deck component is permitted without proper authorization from qualified Link personnel.
- 4.3

#### WARNING

- The DD4000 Double Deck transport system is intended for use moving only caskets and cots.
- Using the DD4000 to transport passengers, or other cargo may result in injury or death.

### 4.4

#### WARNING

- The DD4000 Double Deck should never be operated while a person is in the vehicle cargo area, or on either deck.
- Operating the deck while a person is in the cargo area could result in injury or death.

## 5. OPERATION

### ⚠ WARNING

- Make certain the vehicle is in park and the parking brake is engaged before loading / unloading the vehicle.
- Vehicle movement during loading / unloading could cause operator injury or death.

### ⚠ WARNING

- The capacity of the top deck is **600 pounds maximum**, evenly distributed.
- Loading beyond the capacity may result in equipment damage or failure that may result in injury or death.

### ⚠ CAUTION

- Lift the yellow latch handle to disengage the upper deck latch before lowering the upper deck.
- Failure to disengage the latch before attempting to lower the upper deck may result in equipment damage.

### 5.1 Top Deck Controls & Operation

Immediately inside the rear doors on the driver's side is the operation toggle switch.

#### Operation:

- Push the toggle switch up to raise the deck.
- After raising the yellow handle to disengage the upper deck latch (see **Figure 1**), push the toggle switch down to lower the deck.

TOGGLE SWITCH

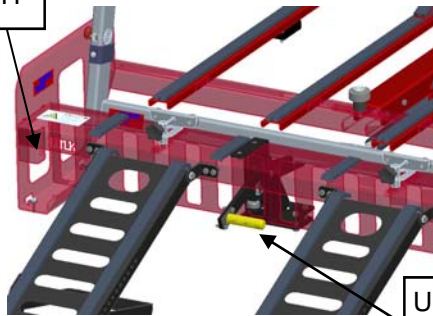


Figure 1

UPPER DECK LATCH HANDLE

### 5.2 Loading / Unloading Procedure

1. With the vehicle in park and the parking brake secured, open the rear door of the vehicle.
2. Fold down the rear ramp.
3. If the top deck is to be used and is in the up position, raise and hold the yellow handle to disengage the upper deck latch, and then lower the top deck by pushing the toggle switch to the "Down" position.

### ⚠ CAUTION

- Make certain that the load is properly secured by tightening the bier pin(s).
- Caskets placed on both the top and bottom deck are prevented from lateral movement by the friction of the front bumpers combined with the clamping force of the bier pin.

4. Slide the items to be transported on to the top deck, taking care to evenly distribute the load as best as possible. Secure items with the bier pins.
5. Raise the top deck by pushing the toggle switch to the "Up" position.
6. Place items to be transported on the bottom deck, taking care to properly secure the load.
7. Raise the rear ramps.
8. Close the rear doors.
9. Reverse the procedure for unloading.

### ⚠ CAUTION

- The System Lock On/Off key switch should be turned to off and the key removed if the unit is left unattended to prevent unauthorized use.

## 6. MAINTENANCE

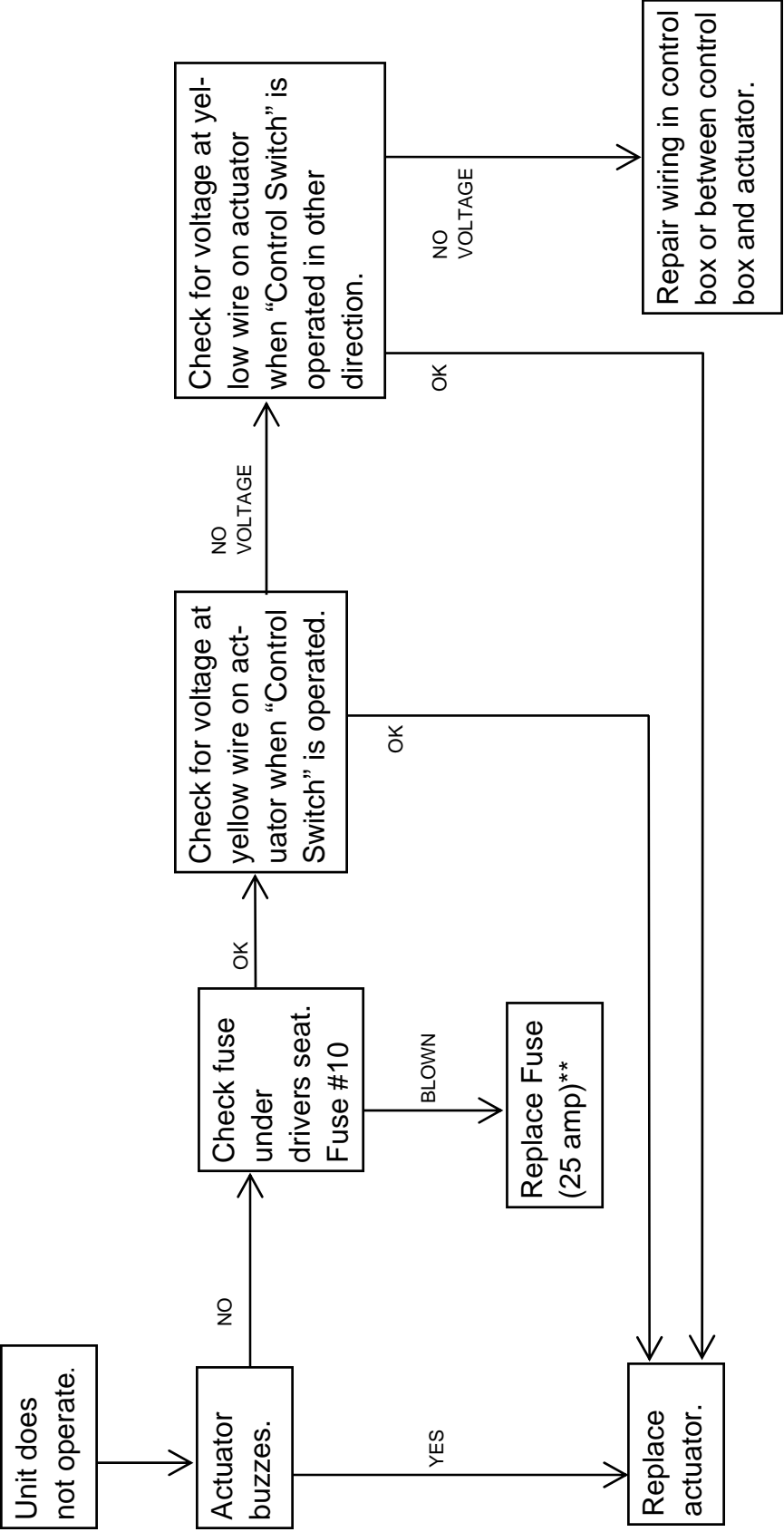
The DD4000C is designed to last for many years without any major maintenance. Annually, check the following items:

- Check tightness of all fasteners. (Refer to Torque Table below)
- Check for wear at all pivots on the framework and actuator linkage.
- Check for cracks in framework.

See the following page for the **DD4000C Electrical Troubleshooting Diagram**.



TORQUE TABLE	
FASTENER	TORQUE
3/8-UNC NUTS	44 FT-LBS
7/16-UNC NUTS	70 FT-LBS
1/2-UNC NUTS	106 FT-LBS

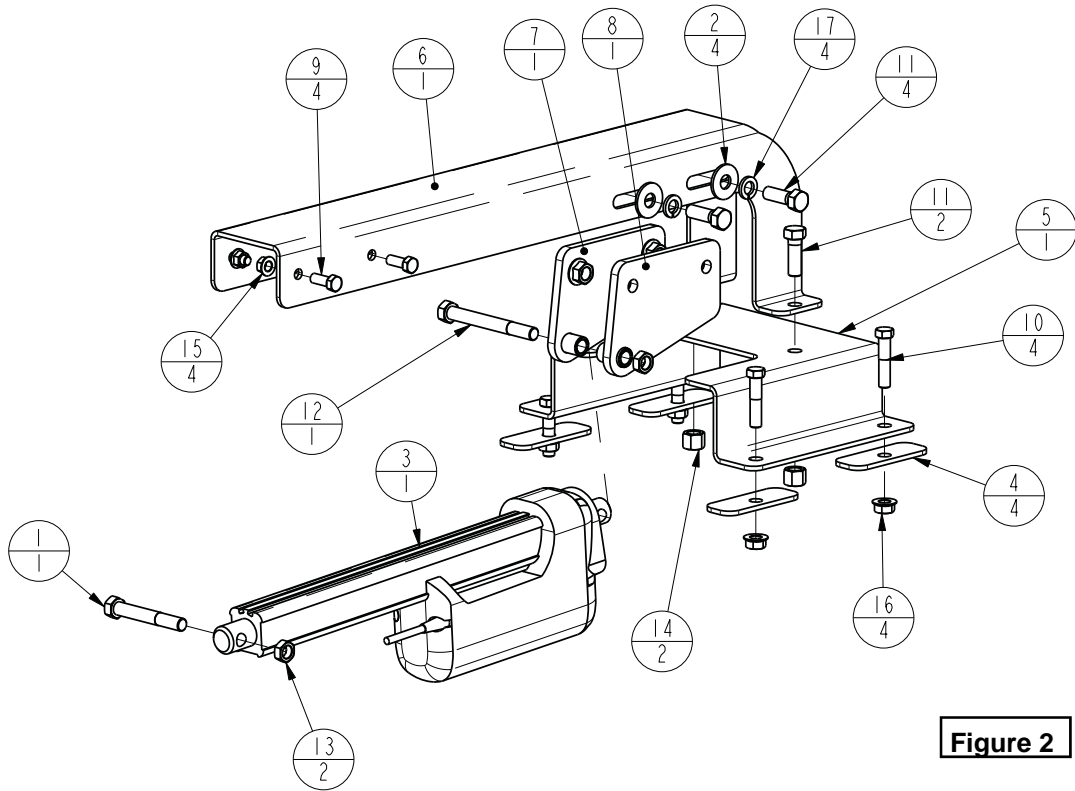


# DD4000C Electrical Troubleshooting Diagram

\*\* See owners manual for proper fuse type.

# DD4000 PARTS

## Actuator Mount Assembly



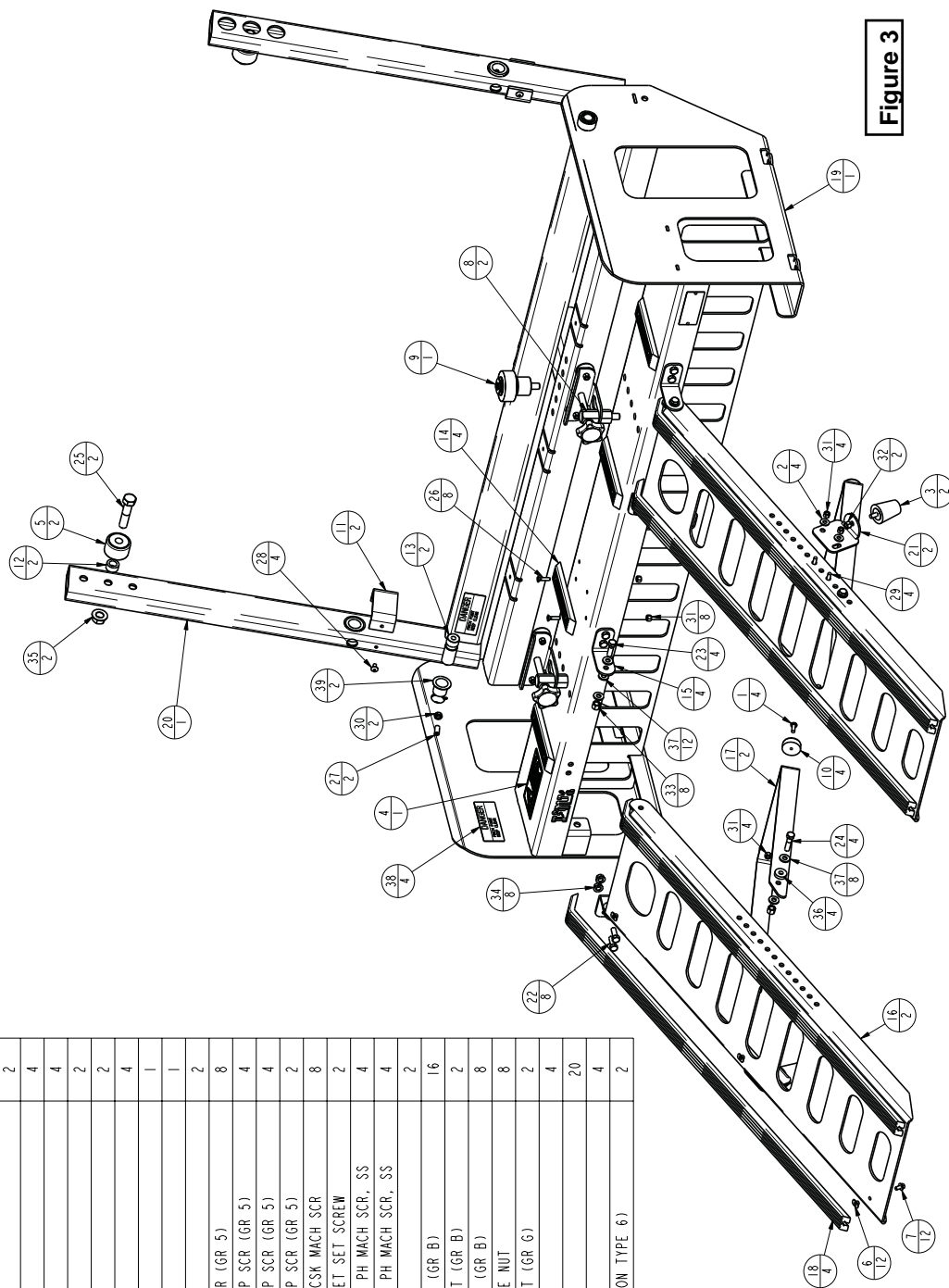
**Figure 2**

ITEM	PART NUMBER	DESCRIPTION	QTY
1	14011628	1/2 X 3 1/2 UNC HEX CAP SCR (GR 5)	1
2	14871600	1/2 TYPE A PLAIN WASHER	4
3	15040314	ACTUATOR, 12V, 300MM STROKE, 6800N	1
4	72250052	PLATE-WASHER	4
5	72252018	BRACKET-MOUNT	1
6	72252030	CHANNEL-MOUNT, ACTUATOR	1
7	72252107	WELDMENT-MOUNT, ACTUATOR	1
8	72252108	WELDMENT-MOUNT, ACTUATOR	1
9	1401-1208	3/8 X 1 UNC HEX CAP SCR (GR 5)	4
10	1401-1416	7/16 X 2 UNC HEX CAP SCR (GR 5)	4
11	1401-1612	1/2 X 1 1/2 UNC HEX CAP SCR (GR 5)	6
12	1401-1636	1/2 X 4 1/2 UNC HEX CAP SCR (GR 5)	1
13	1474-1600	1/2 UNC HEX JAM NUT	2
14	1478-1600	1/2 UNC HEX NYLOCK NUT (GR B)	2
15	1480-1200	3/8 UNC SERRATED FLANGE NUT	4
16	1480-1400	7/16 UNC SERRATED FLANGE NUT	4
17	1485-1600	1/2 LOCK WASHER	4

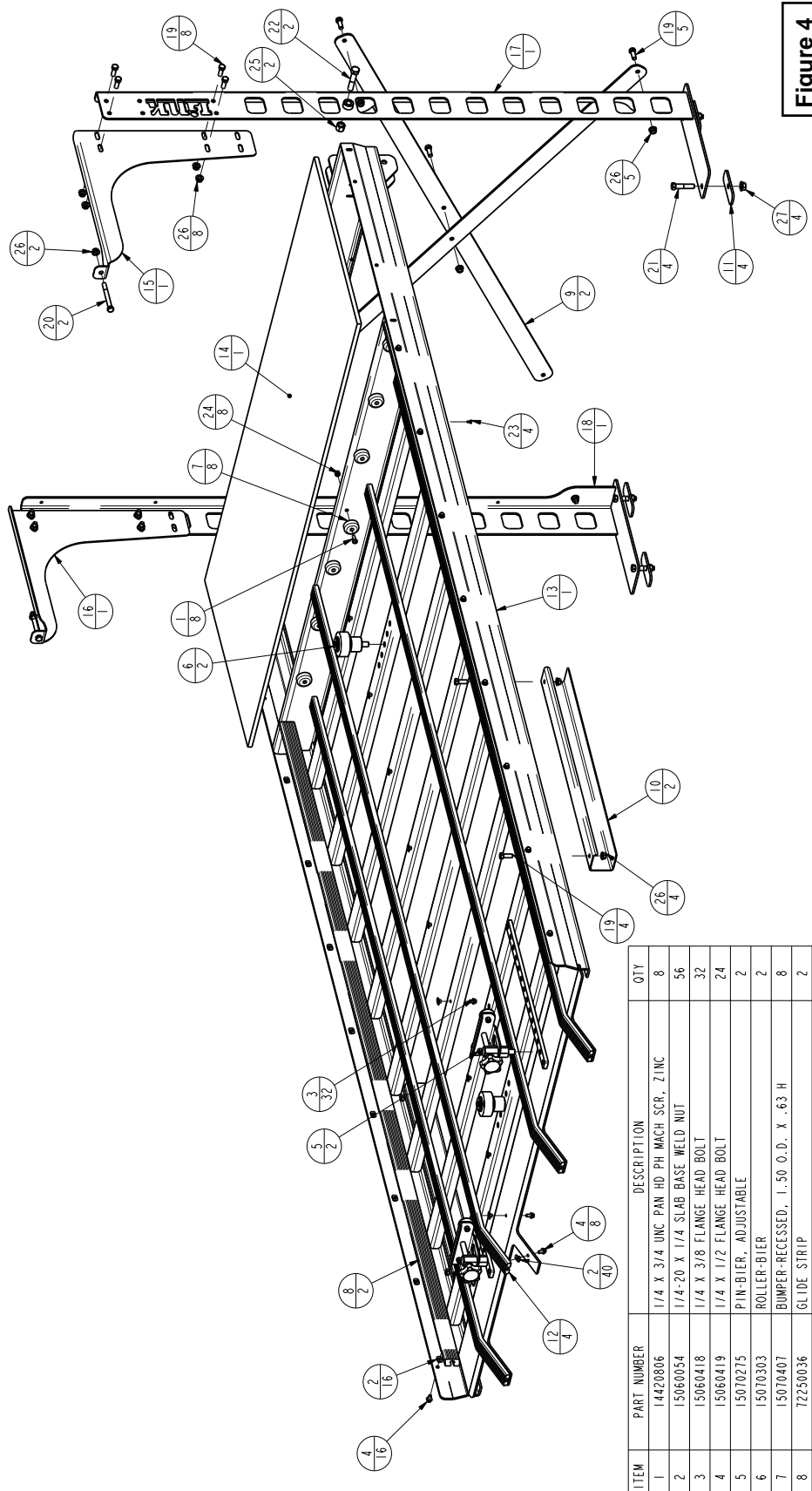
# DD4000 PARTS

## Rear Weldment Assembly

ITEM	PART NUMBER	DESCRIPTION	QTY
1	14420806	1/4 X 3/4 UNC PAN HD PH MACH SCR, Z INC	4
2	14870800	1/4 TYPE A PLAIN WASHER	4
3	15000005	BUMPER-NEOPRENE RUBBER	2
4	15001375	LABEL-WARNING, DOUBLE DECK	1
5	15040312	ROLLER-TRACK	2
6	15060054	1/4-20 X 1/4 SLAB BASE WELD NUT	12
7	15060419	1/4 X 1/2 FLANGE HEAD BOLT	12
8	15070275	PIN-BIER, ADJUSTABLE	2
9	15070303	ROLLER-BIER	1
10	15070407	BUMPER-RECESSED, 1.50 O.D. X .63 H	4
11	15070477	BUMPER-.25 X 2.00 X 5.63	2
12	72250047	BUSHING-SPACER	2
13	72250048	PIN-PIVOT	2
14	72250065	GLIDE STRIP	4
15	72252019	BRACKET-MOUNT, RAMP	4
16	72252020	PLATE-RAMP	2
17	72252021	LEG-RAMP	2
18	72252022	GLIDE STRIP	4
19	72252100	WELDMENT-BOTTOM	1
20	72252101	ARM-LIFT	1
21	72252106	BRACKET-BUMPER,RAMP	2
22	1401-1208	3/8 X 1 UNC HEX CAP SCR (GR 5)	8
23	1401-1210	3/8 X 1 1/4 UNC HEX CAP SCR (GR 5)	4
24	1401-1212	3/8 X 1 1/2 UNC HEX CAP SCR (GR 5)	4
25	1401-2022	5/8 X 2 3/4 UNC HEX CAP SCR (GR 5)	2
26	1415-0808	1/4 X 1 UNC SLTD FTHD CSK MACH SCR	8
27	1440-1207	3/8 X 7/8 UNC HEX SOCKET SET SCREW	2
28	144C-0804	1/4 X 1/2 UNC TRUSS HD PH MACH SCR, SS	4
29	144C-0806	1/4 X 3/4 UNC TRUSS HD PH MACH SCR, SS	4
30	1474-1200	3/8 UNC HEX JAM NUT	2
31	1478-0800	1/4 UNC HEX NYLOCK NUT (GR B)	16
32	1478-1000	5/16 UNC HEX NYLOCK NUT (GR B)	2
33	1478-1200	3/8 UNC HEX NYLOCK NUT (GR B)	8
34	1480-1200	3/8 UNC SERRATED FLANGE NUT	8
35	1480-2003	5/8 UNC TOP LOCK FL NUT (GR G)	2
36	1491-0003	NYLON WASHER	4
37	1491-6405	WASHER-NYLON	20
38	1500-1311	DECAL-P INCH POINT	4
39	1504-0092	FLANGED BEARING (THOMSON TYPE 6)	2



**Figure 3**

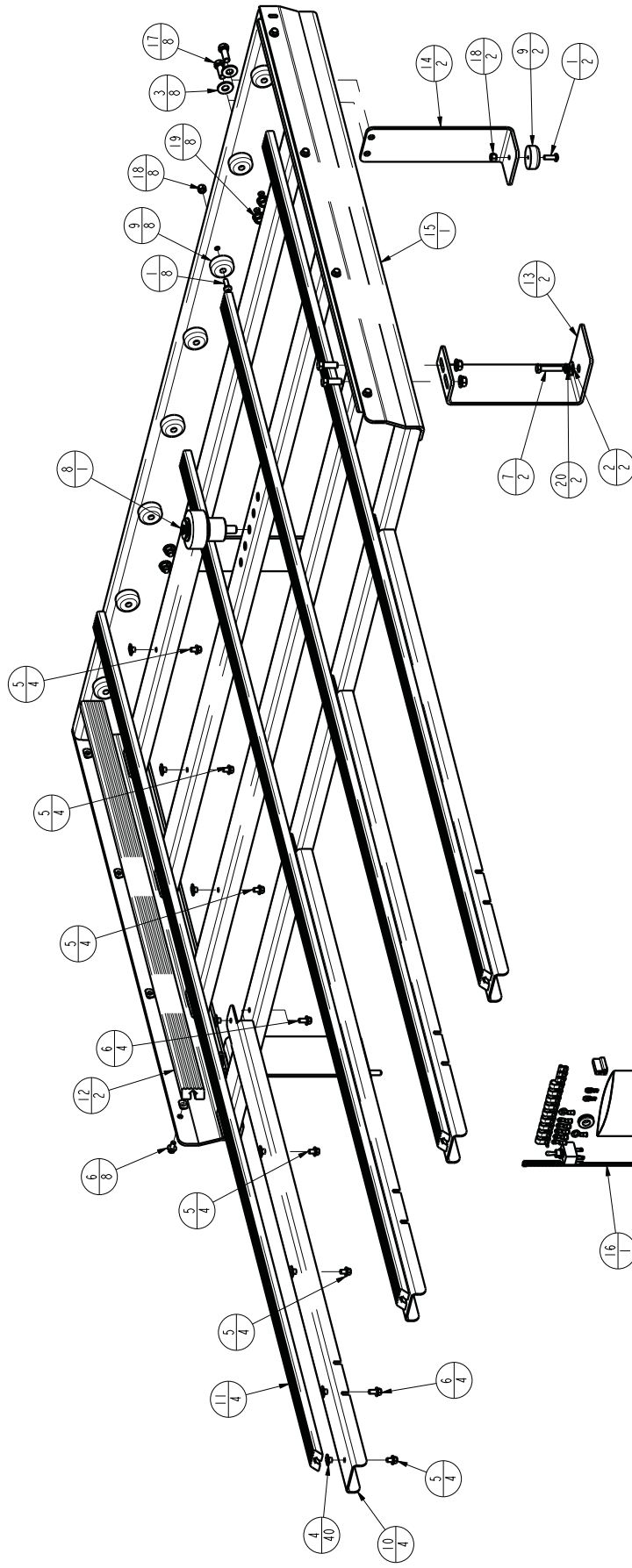


**Figure 4**

# DD4000 PARTS

## Upper Deck Assembly

ITEM	PART NUMBER	DESCRIPTION	QTY
1	1442806	1/4 X 3/4 UNC PAN HD PH MACH SCR, Z INC	8
2	15060054	1/4-20 X 1/4 SLAB BASE WELD NUT	56
3	15060418	1/4 X 3/8 FLANGE HEAD BOLT	32
4	15060419	1/4 X 1/2 FLANGE HEAD BOLT	24
5	15070275	PIN-BIER, ADJUSTABLE	2
6	15070303	ROLLER-BIER	2
7	15070407	BUMPER-RECESSED, 1.50 O.D. X .63 H	8
8	72250036	GLIDE STRIP	2
9	72250044	STRAP-BRACE	2
10	72250045	CHANNEL-TRACK, ROLLER	2
11	72250052	PLATE-WASHER	4
12	72250063	GLIDE STRIP	4
13	72251009	WELDMENT-DECK, TOP	1
14	72252010	BOARD-DECK	1
15	72252014	BRACKET-ROOF	1
16	72252015	BRACKET-ROOF	1
17	72252102	POST-SUPPORT, DECK	1
18	72252103	POST-SUPPORT, DECK	1
19	1401-1208	3/8 X 1 UNC HEX CAP SCR (GR 5)	17
20	1401-1228	3/8 X 3 1/2 UNC HEX CAP SCR (GR 5)	2
21	1401-1416	7/16 X 2 UNC HEX CAP SCR (GR 5)	4
22	1401-1620	1/2 X 2 1/2 UNC HEX CAP SCR (GR 5)	2
23	1459-0C06	NO 8 X .375 CR PN HD TAPPING SCR	4
24	1478-0800	1/4 UNC HEX NYLOCK NUT (GR B)	8
25	1478-1600	1/2 UNC HEX NYLOCK NUT (GR B)	2
26	1480-1200	3/8 UNC SERRATED FLANGE NUT	19
27	1480-1400	7/16 UNC SERRATED FLANGE NUT	4



**Figure 5**

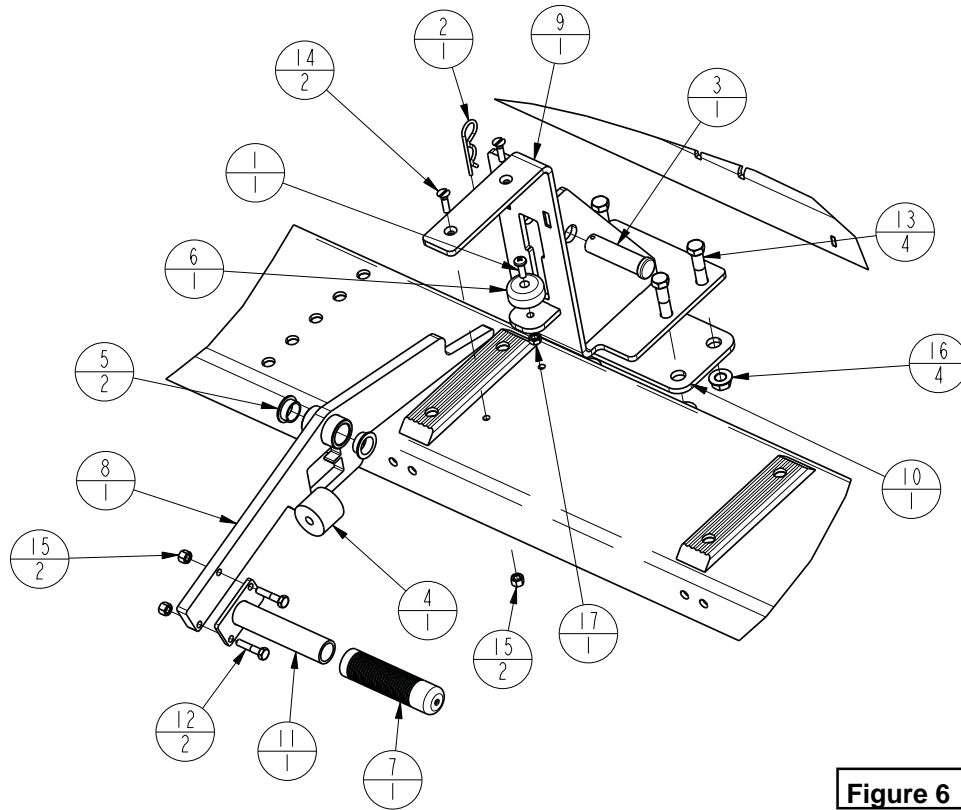
ITEM	PART NUMBER	DESCRIPTION	QTY
1	14420806	1/4 X 3/4 UNC PAN HD PH MACH SCR, ZINC	10
2	14871000	5/16 TYPE A PLAIN WASHER	2
3	14871200	3/8 TYPE A PLAIN WASHER	8
4	15060054	1/4-20 X 1/4 SLAB BASE WELD NUT	40
5	15060418	1/4 X 3/8 FLANGE HEAD BOLT	24
6	15060419	1/4 X 1/2 FLANGE HEAD BOLT	16
7	15060450	HEX CAP SCREW, M8 X 1.25 X 40, CLASS 10.9	2
8	15070303	ROLLER-BIER	1
9	15070407	BUMPER-RECESSED, 1.50 O.D. X .63 H	10
10	72250039	CHANNEL-SUPPORT, GLIDE	4
11	72250049	GLIDE STRIP	4
12	72250050	GLIDE STRIP	2
13	72252016	BRACKET	2
14	72252017	BRACKET-SUPPORT, DECK	2
15	72252105	DECK-BOTTOM	1
16	72252109	KIT-ELECTRICAL, DD4000	1
17	1401-1208	3/8 X 1 UNC HEX CAP SCR (GR 5)	8
18	1478-0800	1/4 UNC HEX NYLOCK NUT (GR B)	10
19	1480-1200	3/8 UNC SERRATED FLANGE NUT	8
20	1485-1000	5/16 LOCK WASHER	2

# DD4000 PARTS

## Lower Deck Assembly

# DD4000 PARTS

## Deck Latch Assembly



**Figure 6**

ITEM	PART NUMBER	DESCRIPTION	QTY
1	14420806	1/4 X 3/4 UNC PAN HD PH MACH SCR, ZINC	1
2	14490002	PIN-COTTER, 1/8 X 2 1/2	1
3	14510004	PIN-CLEVIS, 3" X 3/4"	1
4	15000929	BUMPER-SPRING	1
5	15040098	BUSHING-PIVOT, NYLON, 3/8	2
6	15070407	BUMPER-RECESSED, 1.50 O.D. X .63 H	1
7	15070476	GRIP-VINYL, ROUND	1
8	72251031	WELDMENT-HANDLE, LATCH	1
9	72251032	WELDMENT-MOUNT, LATCH	1
10	72251033	PLATE-BACKING	1
11	78552213	HANDLE-RAMP	1
12	1401-0810	1/4 X 1 1/4 UNC HEX CAP SCR (GR 5)	2
13	1401-1416	7/16 X 2 UNC HEX CAP SCR (GR 5)	4
14	1415-0808	1/4 X 1 UNC SLTD FTHD CSK MACH SCR	2
15	1478-0800	1/4 UNC HEX NYLOCK NUT (GR B)	4
16	1480-1400	7/16 UNC SERRATED FLANGE NUT	4
17	1484-0810	1/4 UNC HEX CTR LOCK NUT, SS	1



LINK MANUFACTURING, LTD.  
 223 15TH ST. NE  
 SIOUX CENTER, IA 51250  
 1-800-248-3057