



INSTALLATION INSTRUCTIONS

SR50-B (7810-A003)



*Link Mfg. Ltd.
223 15th St. N.E.
Sioux Center, IA USA
51250-2120*

*(712) 722-4868
Fax (712) 722-4779*

**QUESTIONS?
CALL CUSTOMER
SERVICE
1-800-248-3057
www.linkcmp.com**

The **Link SR50-B** fits 1994 and newer Chevrolet Suburbans or GMC Yukons.

LINK® MODEL “SR50-B”

Review the **Parts List** on **Page 3** to become familiar with the different components of the **SR50-B**. Be sure all items are included before beginning assembly.

IMPORTANT: Installation of the **SR50-B** may vary depending on what type of vehicle you have and how it is set up. Due to variables in different vehicles, the fit of the **SR50-B** should be evaluated before beginning installation.

1. Remove the ramp (Item #19) from the SR50-B bracketry.
2. Install the ramp stop bracket (Item #17) as shown in **Fig. 4**. Do not fully tighten the fasteners at this time to allow for alignment with the ramp.
3. Remove the two fasteners from the rear cargo hold-downs of your vehicle (See **Fig. 1**) using the supplied Torx key.
4. Position the SR50-B bracketry in the vehicle and install the two M10 X 80 fasteners (Item #12) using the supplied hex key to securely fasten the unit in place.

Note: 1994 to 1999 models will need to install additional spacers (Part #7810-3104) under each side of the standard bracketry. See **Figs. 2** and **3** for details.

5. Install the ramp as shown in **Fig 4**.
6. Check the alignment of the rubber ramp holder (Item #9) with the side ramp stop bracket when folding the ramp up. Adjust the bracket if necessary, then tighten the fasteners referred to in *Step 2*.

Maintenance:

- A. Clean with soap and water or window cleaner.
- B. Call Link Mfg. 1-800-248-3057 with any questions or comments.

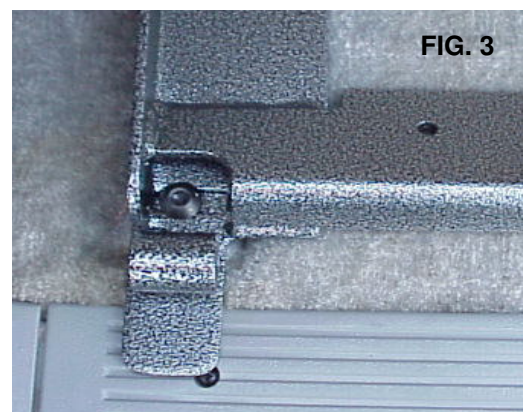
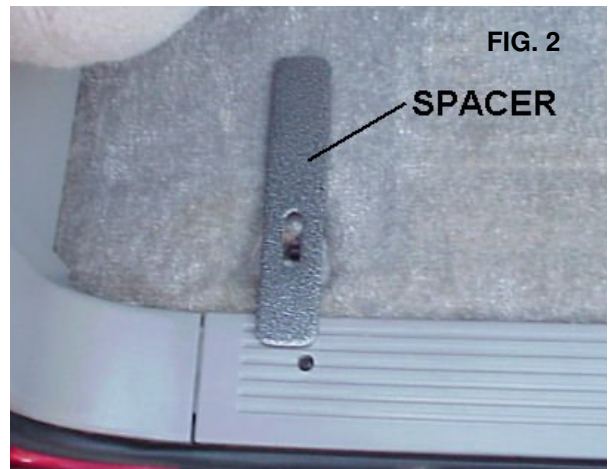
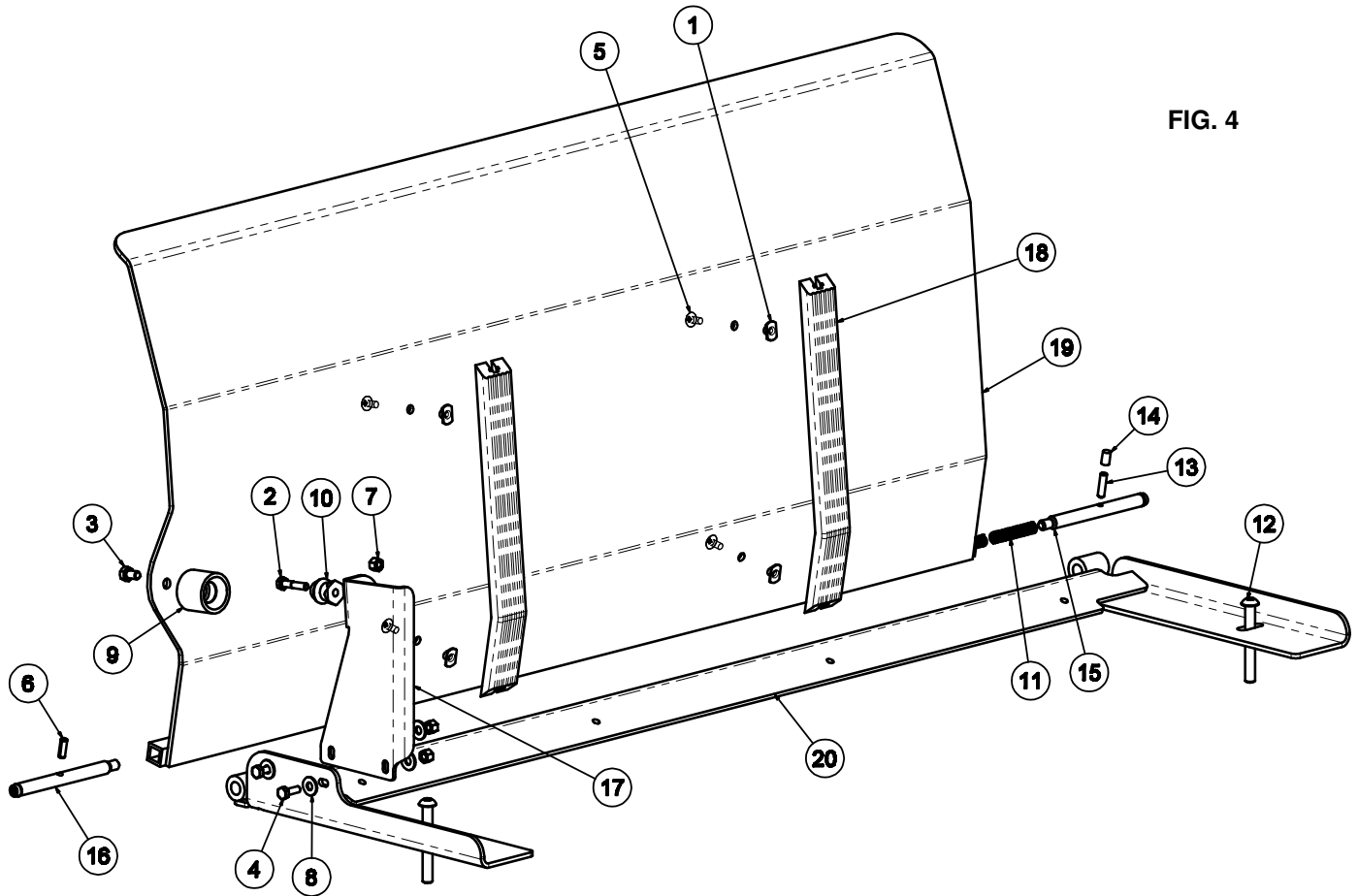


FIG. 4



LINK® MODEL "SR50-B" PARTS LIST

ITEM	PART NUMBER	DESCRIPTION	QTY
1	1506-0054	1/4-20 X 1/4 SLAB BASE WELD NUT	4
2	1401-0810	1/4 X 1 1/4 UNC HEX CAP SCR (GR 5)	1
3	1401-1004	5/16 X 1/2 UNC HEX CAP SCR (GR 5)	1
4	1409-0806	1/4 X 3/4 UNC HEX CAP SCR, SS	2
5	144C-0804	1/4 X 1/2 UNC TRUSS HD PH MACH SCR, SS	4
6	1450-0806	ROLL PIN, 1/4 X 3/4, PLAIN FINISH	2
7	1478-0800	1/4 UNC HEX NYLOCK NUT (GR B)	3
8	1487-0800	1/4 TYPE A PLAIN WASHER	4
9	1500-0003	RAMP HOLDER, FEMALE END	1
10	1500-0004	RAMP HOLDER, MALE END	1
11	1501-0001	COMPRESSION SPRING	2
12	1506-0001	M10 X 1.5 X 80 BUTTON HD SOCKET SCREW	2
13	1506-0034	SET SCREW, 1/4-20 UNC X 1.0	1
14	1507-0061	PROTECTIVE CAP-VINYL COVER, 3/16 RD X 1/2	1
15	7000-0034	BOLT-HINGE ARM	1
16	7000-0036	RAMP PIVOT BOLTS	1
17	7810-0003	BRACKET-STOP, RAMP	1
18	7810-0006	GLIDE STRIP	2
19	7810-1100	RAMP WELDMENT	1
20	7810-3100	PLATE-MOUNT, RAMP	1