

INSTALLATION

SR75 (78113A00)



*Link Mfg. Ltd.
223 15th St. N.E.
Sioux Center, IA USA
51250-2120*

*(712) 722-4868
Fax (712) 722-4779*

**QUESTIONS?
CALL CUSTOMER
SERVICE
1-800-248-3057
www.linkcmp.com**

The **Link SR75** fits the 2000 to 2014 Chevy Suburban and GMC Yukon XL.

Estimated Weight: 45 lbs.

LINK MODEL "SR75"

Review the **Parts List** on **Page 3** to become familiar with the different components of the **SR75**. Be sure all items are included before beginning assembly.

IMPORTANT: Installation of the **SR75** may vary depending on what type of vehicle you have and how it is set up. Due to variables in different vehicles, the fit of the **SR75** should be evaluated before beginning installation.

- A. The SR75 is held down using existing fastener holes from the cargo hold-downs. See **Fig. 1** for approximate location. Remove the cargo hold-downs and their fasteners with the supplied Torx key.
- B. The ramp stop bracket (Item #18) is shipped unattached. See **Fig. 2** for details on attaching it. Remove the two bolts that hold on the ramp mount block (Item # 13), and then attach the bracket and the ramp mount block using the bolts that were just removed. **Note:** There is some adjustment that can be made with the ramp holder bracket on the ramp to properly align the ramp holders.
- C. Set the spacers (Item #21) in place over the cargo hold-down holes and set the deck in place, aligning the hold-down holes in the deck with the cargo hold-down holes where the bolts were removed in Step A. Loosely install the two button head screws (Item #11). Do not tighten at this time.
- D. Snap the rear ramp into place and confirm proper fit of the unit. With the deck positioned, check all clearance issues. Leave adequate clearance between the deck/ramp and the vehicle components.
- E. Once the deck is positioned, tighten the two button head screws with the hex key that is provided. Tighten firmly, but do not over-tighten.

Maintenance:

- A. Clean with soap and water or window cleaner.
- B. To insure the ease of ramp operation, you may lubricate the female ramp holder with silicone. Use lube sparingly.
- C. Call Link Mfg. 1-800-248-3057 with any questions or comments.

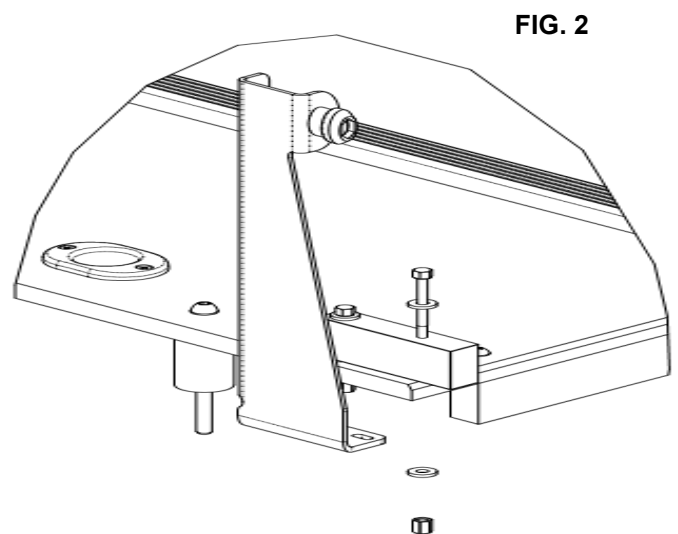
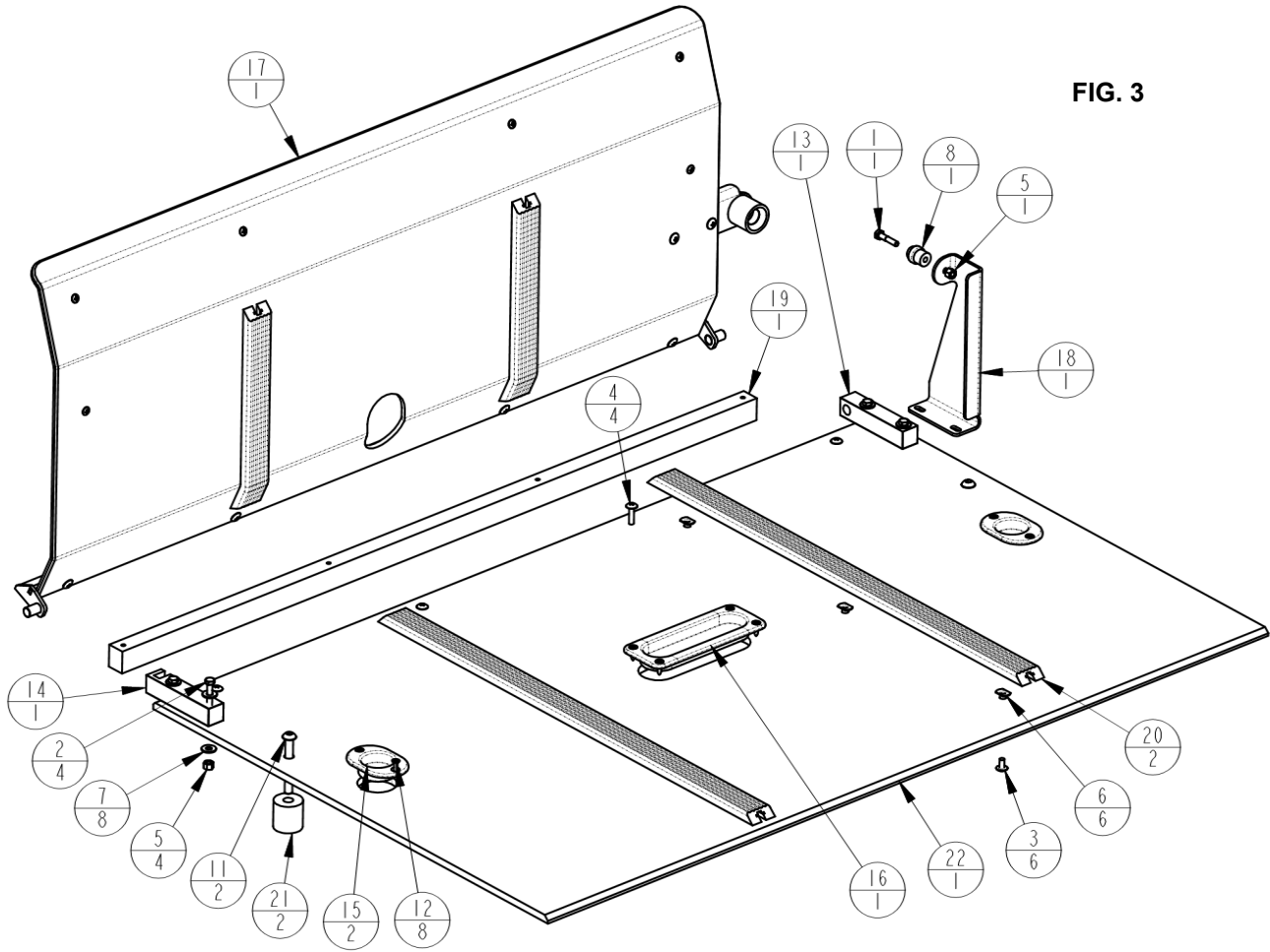


FIG. 3



BILL OF MATERIALS FOR ASSEMBLY:

78113A00

ITEM	PART NUMBER	DESCRIPTION	QTY
1	1401-0810	1/4 X 1 1/4 UNC HEX CAP SCR (GR 5)	1
2	1401-0816	1/4 X 2 UNC HEX CAP SCR (GR 5)	4
3	144C-0804	1/4 X 1/2 UNC TRUSS HD PH MACH SCR, SS	6
4	144C-0810	1/4 X 1 1/4 UNC TRUSS HD PH MACH SCR, SS	4
5	1478-0800	1/4 UNC HEX NYLOCK NUT (GR B)	5
6	1484-0808	1/4-20 X 7/16 SLAB BASE WELD NUT	6
7	1487-0800	1/4 TYPE A PLAIN WASHER	8
8	15000006	RAMP HOLDER, MALE END	1
9	1504-0204	KEY-T45 TORX	1
10	1504-0207	KEY-6 MM HEX	1
11	1506-0001	M10 X 1.5 X 80 BUTTON HD SOCKET SCREW	2
12	15060048	#10 X 3/4 SS FLAT HD TAP SCR	8
13	70000090	BLOCK-MOUNT, RAMP	1
14	70000091	BLOCK-MOUNT, RAMP	1
15	7800-0011	RECESSED COT CUP	2
16	7800-0016	SUPER SIZED RECESSED COT CUP	1
17	78113000	KIT-RAMP	1
18	78113006	BRACKET-STOP, RAMP	1
19	78113007	STRIP-SUPPORT, DECK	1
20	78113008	GLIDE STRIP	2
21	78113009	SPACER-MOUNT, DECK	2
22	78113010	PLATE-SR75	1